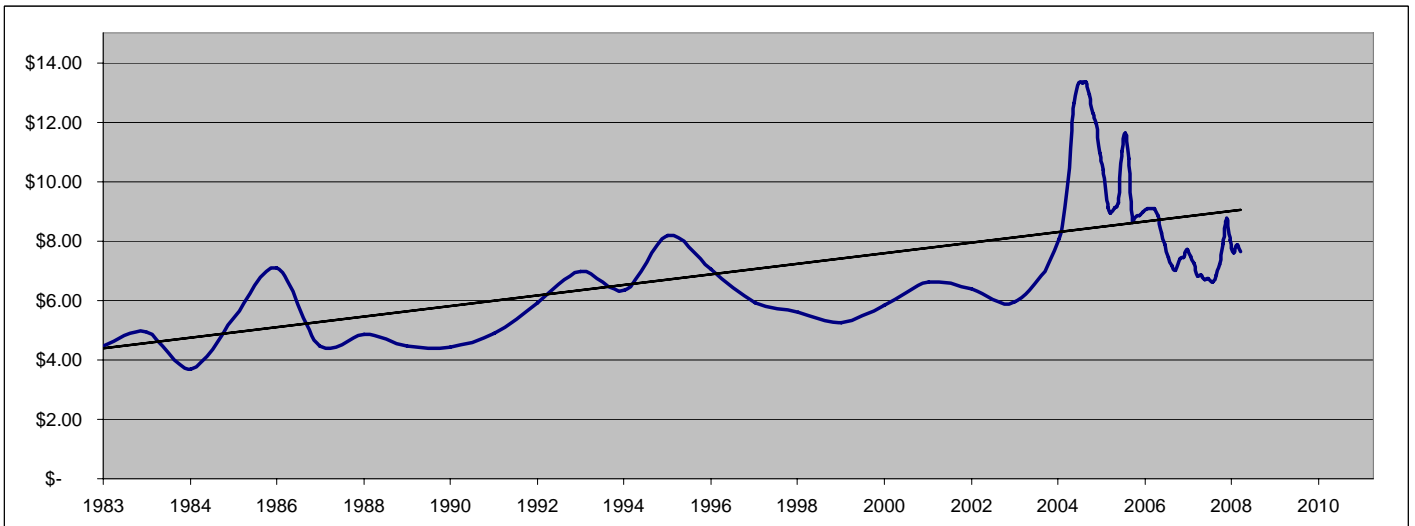




Almond Price History

(Non Pareil size 23/25 Almonds)



- The above chart is provided to demonstrate current and historical almond prices. Prices can go up and down. Past prices are not necessarily indicative of future prices.
- It is based on the price secured for Non Pareil (NP) size 23/25 almonds. Orchards managed by AIL comprise different types of almond varieties which pollinate each other. Different varieties command different prices.
- Price data source: 1982/83 to 2004/05: Carroll Partners Pty Ltd, May 05 onwards: Almondco Australia Limited.
- Exchange Rates: Prices from 1982/83 to 1991/92 are based on an exchange rate of US\$0.78= A\$1.00. Prices from 1992/93 to 2004/05 are based on the average daily US\$:A\$ exchange rate (annualised). Prices from May 05 onwards are based on the average monthly exchange rate.
- Exchange rate data source: Oanda Corporation.
- The trend line shown is linear in nature